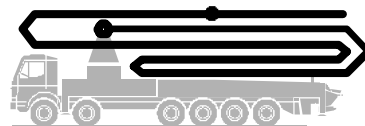
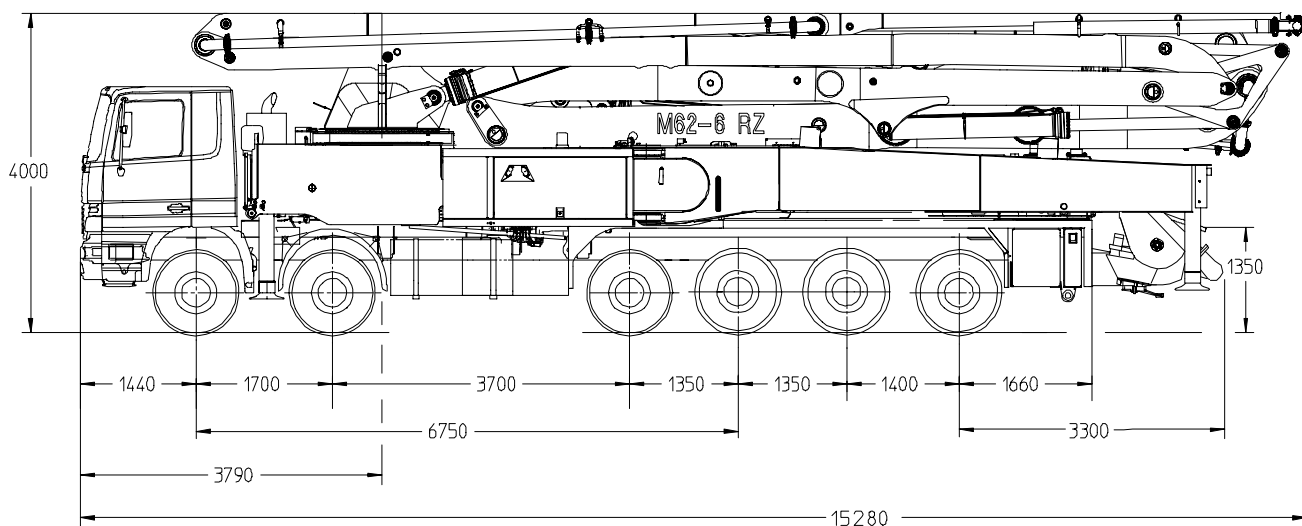


# Truck-mounted concrete pump **BSF 62-6.16 H LS .20 H**



Output up to 200 m<sup>3</sup>/h  
 Delivery pressure up to 130 bar



Note: Standard version. Dimensions depend on truck.  
 Dimensions in mm, MB-Actros 6560 as example

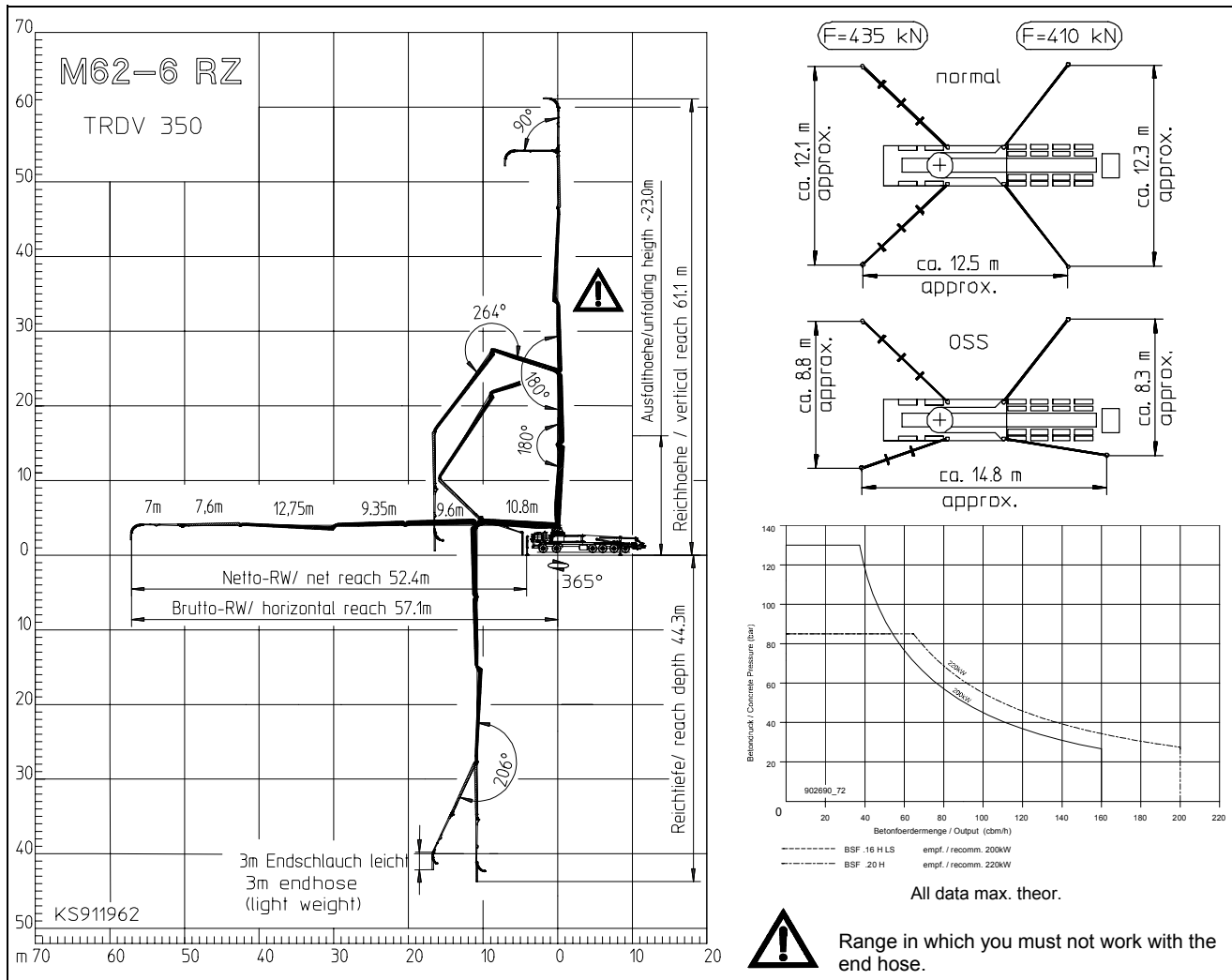
## Technical Data

Boom M 62 - 6		
Reach height	m	61.1
Horizontal reach	gross	m 57.1
	net	m 52.4
Reach depth max.	m	44.3
Unfolding height	m	23.0
End hose length	m	3
Number of arms	6	
Folding system	Roll-Z-folding (RZ)	
Delivery line	DN 117/5.5	

Pump	BSF	.16 H LS	.20 H
Output	m <sup>3</sup> /h	160	200
Delivery pressure	bar	85	85
Strokes	1/min.	26	26
Delivery cylinder	∅ mm	250	280
Stroke	mm	2100	2100

Delivery line boom max. 85 bar.  
 All data maximum theoretical.

## Reach information diagram, Support, Performance diagram



### Delivery scope – Standard

- support plates 4x in magazine
- concrete hopper RS 900 with agitator
- diagnose interfaces, central for electric and hydraulic
- EBC (Ergonic boom control)
- EOC (Ergonic output control)
- EPS (Ergonic pump system)
- EGD (Ergonic Graphic Display)
- radio remote control with display
- remote control with 40m cable
- rubber collar
- support plates 4x + timber wood 8x1000 in magazin added
- painting: arm assembly RAL 3020 signalred
- painting: pump MB 1227 chrome yellow
- spotlights 4x for illumination support area
- OSS one side support
- flushing water pump 160 l/min 25 bar
- water tank
- pipe magazin on swing leg
- spray tank
- traffic permission kit
- concrete line DN 117/5.5 PM 2015 twin layer
- splash guard foldable
- lighting in toolbox
- central lubrication boom, electrical
- central lubrication hopper, electrical
- working search light on boom for hopper illumination
- flashlights for 4 support legs front and rear
- high pressure water pump 100 bar with dry-run protection
- vibrator, electrical
- step at rear of hopper
- hard metal wear parts kit

Please see quotation for exact serial delivery scope.