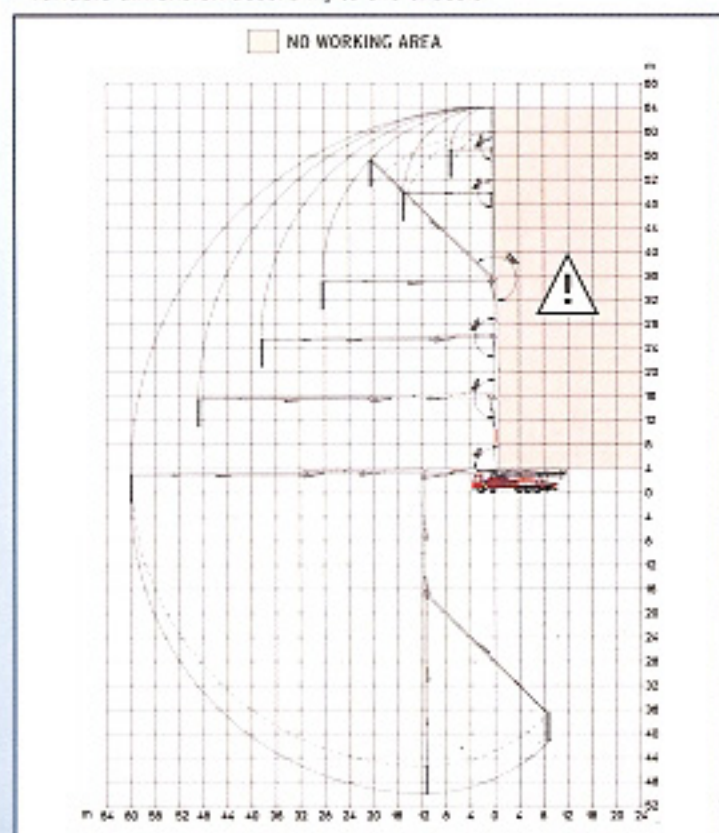


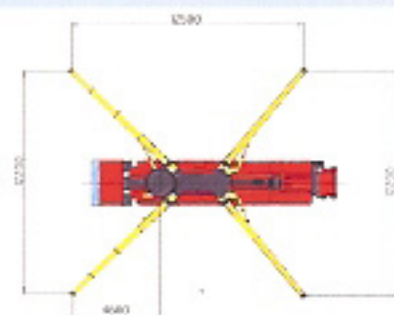


* Variable dimension according to the chassis



MAIN FEATURES

- Perfect assembling on standard 5 or 6 axes chassis.
- Boom with welded box section, heads obtained directly by cores.
- High torsion rigidity boom stabilization with integrated front and rear outriggers.
- Steel building with high yield tensile strength and structural check of critical points by means of Finite Elements Method (FEM).
- High functionality, reliability and low operating costs.



PUMPING UNIT > technical specifications

Model	SCL130A	SCL150AHP	SCL185A
Concrete output (MAX.) m ³ /h*	130	149	184
Concrete pressure bar*	61	76	61
Pumping cylinders (Ø x stroke) mm	230x2000		
Stroke volume	83,09 l		
Numbers of strokes per min.	26	30	37
Max oil pressure	350 bar		
Hopper capacity	600 l		
Output opening	178 mm		

* Rod side feeding

PLACING BOOM technical specifications

Max. height from ground	64,35 m
Max. horizontal reach	60,35 m
Max. downward reach	-50 m
Sections number	6
Pipeline diameter	125 mm
Flexible terminal hose	3 m
Turret rotation angle	370°
1 st , 2 nd , 3 rd , 4 th , 5 th and 6 th section opening angles	90°-180°-180° 225°-180°-90°
Opening system	R-Z
Front outriggers	Telescopic diagonal spread
Rear outriggers	Swing spread
Front opening	12,20 m
Rear opening	12,20 m
Max pressure in circuit	380 bar